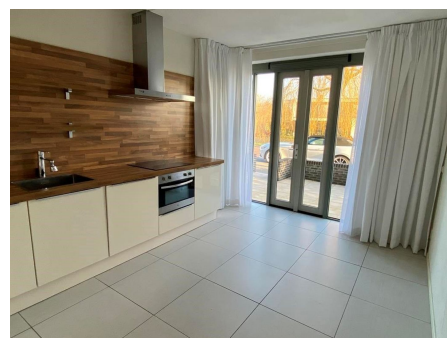


Save time and money go directly to
the best and quickest agent



Marjoleinlaan, Amstelveen

Details:

Size of the house (m2) approximately 170 m2

Number of bedrooms: 4

Number of bathrooms: 1

Type of house: Family house

Quality of public transportation: Good

Type	: Terraced house
Decoration	: Semi Furnished, Optionally furnished
Garden	: Yes, Backyard, West, 600x1000cm
Living Surface	: 170m ²
Rooms	: 6

Rent € 3.200 p.m. excl. per month