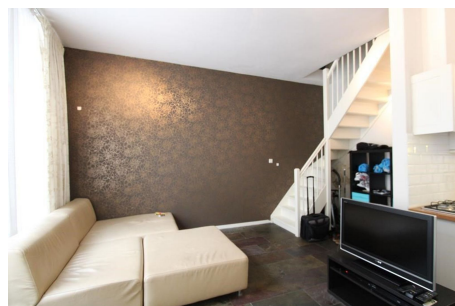


*Save time and money go directly to
the best and quickest agent*



Pieter Baststraat, Amsterdam

This apartment is located on the 'Duivelseiland', which means that the Vondelpark, the cozy Pijp and the Museumplein are within walking distance. As a result, there is a wide range of nice catering establishments and shops in the immediate vicinity, around the Beethovenstraat, the PC Hooftstraat, and the Pijp with the Albert Cuyp.

Public transport is excellently arranged via tram 3, 5 and 12 and you can easily reach the Ring A-10 by car.

Type	: Ground floor apartment
Decoration	: Fully furnished
Living Surface	: 75m ²
Rooms	: 2

Rent € 2.500 p.m. excl. per month